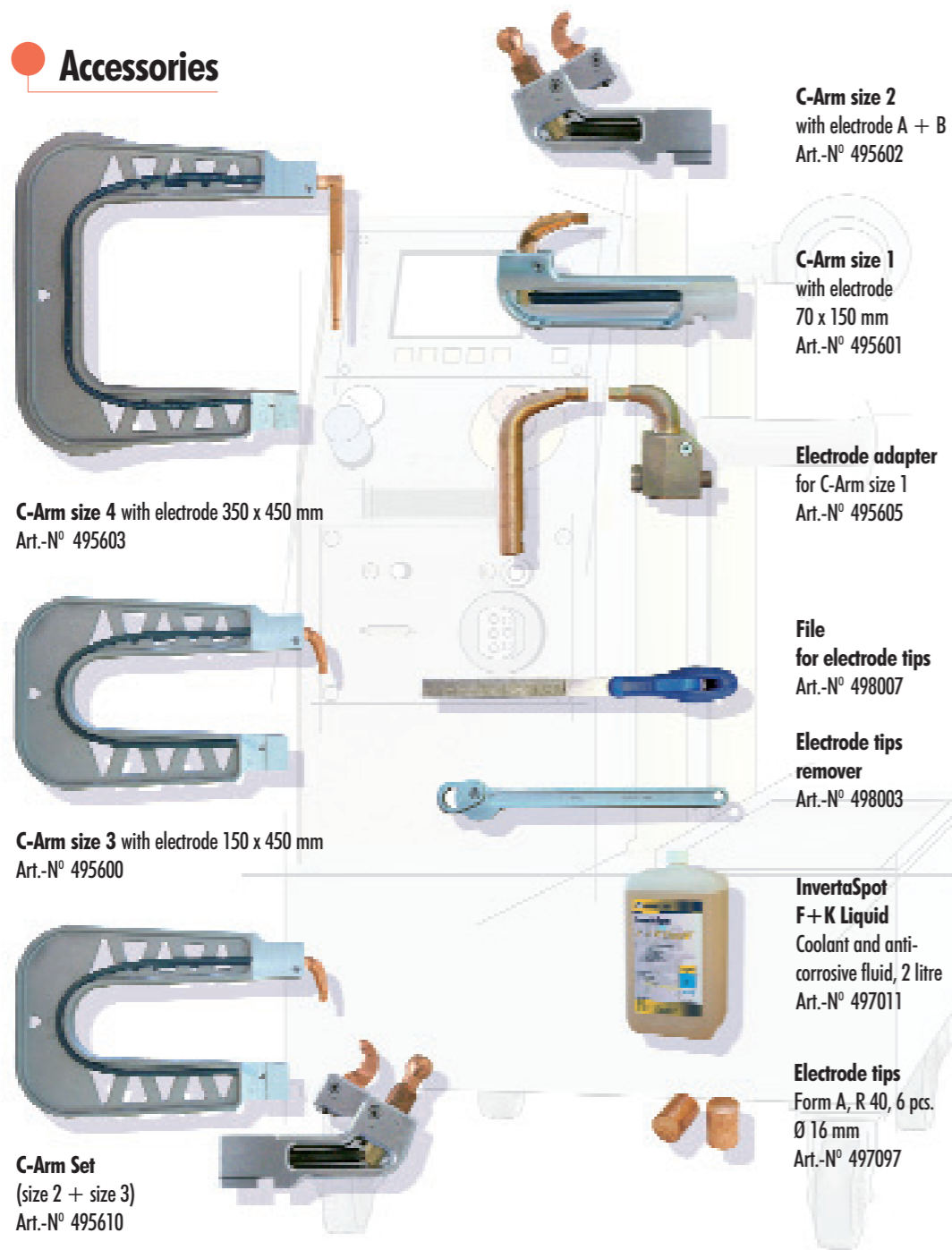




MV Marketing und Vertriebs GmbH & Co. KG
 Wieländer + Schill
 Siederstraße 50
 78054 Villingen-Schwenningen
 fon 0 77 20 / 83 17-0
 fax 0 77 20 / 12 55
 info@wielanderschill.com
 www.wielanderschill.com

We solve problems

Accessories



C-Arm size 2
with electrode A + B
Art.-N° 495602

C-Arm size 1
with electrode
70 x 150 mm
Art.-N° 495601

Electrode adapter
for C-Arm size 1
Art.-N° 495605

File
for electrode tips
Art.-N° 498007

**Electrode tips
remover**
Art.-N° 498003

**InvertaSpot
F + K Liquid**
Coolant and anti-
corrosive fluid, 2 litre
Art.-N° 497011

Electrode tips
Form A, R 40, 6 pcs.
Ø 16 mm
Art.-N° 497097

C-Arm size 4 with electrode 350 x 450 mm
Art.-N° 495603

C-Arm size 3 with electrode 150 x 450 mm
Art.-N° 495600

C-Arm Set
(size 2 + size 3)
Art.-N° 495610

Technical Data

Content of Delivery:

Power unit GT
 85 l tank with trolley
 C-pincer with transformer
 C-Arm size 1 70 x 150 mm
 Balancer with spring unit
 User's guide

Power: 3x 400 V / 3x 200 V
 Welding current: 10.000 Hz
 Max. welding power: ≤ 13 kA
 Continuous duty 100% ED: 2,8 kA
 Open circuit voltage: 12 V DC
 Mains supply: 3 x 400 V 50 Hz
 Max. power with 5 % ED: 156 kVA
 Cont. power rate(100% ED): 35 kVA
 Fuse (slow blow): 32 A
 Connector cable (Cu): 4 x 10 mm²
 System of protection: IP21
 Temperature class: A
 Air pressure max: 6 – 8 bar
 Refrigerant: Water + antifreeze
 Tank volume: 85 l
 Flow rate: 5 l / min.
 Dimensions (H x B x W): 810 x 560 x 750 mm
 Weight without refrigerant: 119 kg
 Noise emission: 70 dB (A)

03/07 - www.ideadesign.de - Subject to technical changes.



MV Marketing und Vertriebs-GmbH & Co. KG
Wieländer+Schill
 Professionelle Karosserie-Spezialwerkzeuge

InvertaSpot® GT

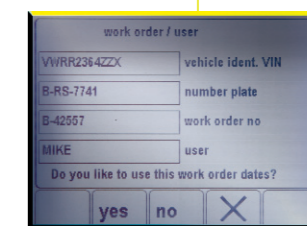
We solve problems

InvertaSpot® GT

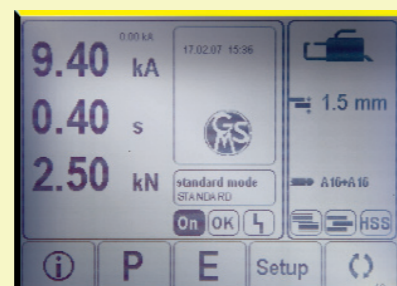
With high frequency Inverter-Technology
 Made in Germany by Wieländer + Schill

10.000 Hz
 ≤ 13.000 A
 ≤ 6,0 kN

Art.-N° 471000



We want to make it easier for you!



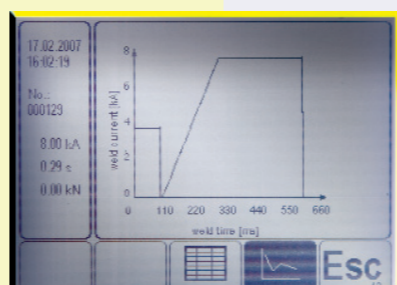
Standard mode



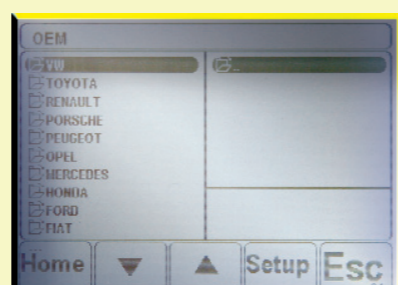
Special mode



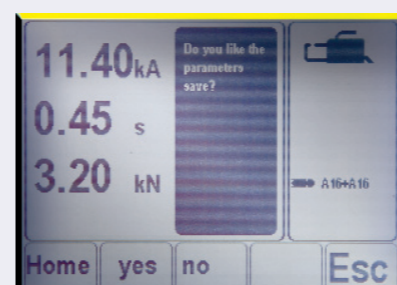
Expert mode



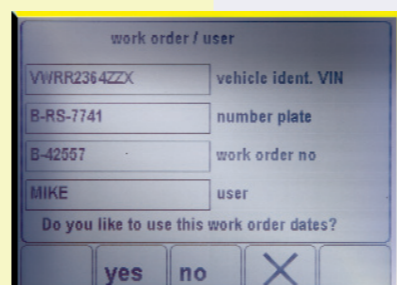
Spot welding control



OEM manufacturer files



Saving mode



Work order mode

User friendly

- The dialogue on the main menu is simple (international languages)
- Updates via SD card – easy internet update available
- Universal welding programs as well as professional programs, where the user can select the steel quality and metal thickness individually. This is of the highest importance when welding multilayers of different steel quality with different coatings
- The magnetic field is far below the legal limitations, therefore the InvertaSpot GT works with the lowest possible load to the human body

Power unit + control board

- Permanent weld process control
- Relative and absolute Impedance measuring
- HF- Inverter-Technology / 10.000 Hz
- Welding current up to 13.000 A. / 16A fuse ≤ 10.000 A.
- Process control according to the quality of the steel to be welded
- Constant current control (CCC) for the newest generation
- Aluminium welding is possible with 20.000 A version
- Primary current consumption much less than traditional welders



GT Documentation

- All weld data is saved onto the SD memory card
- You are able to print up to 100.000 saved spot welds on A4 paper

With the GT all data is available at any time!
If needed the data can be stored and is ready whenever is required!

Station	Date	Time	Program name	Weld	Weld	Weld	Weld	Weld	Weld	Weld	Weld	Weld	Weld	Weld	Weld	Weld	Weld	Weld	Weld	Weld	
100	17.02.2007	15:36	STP00	0	8.40	0	3.60	0	0.36	0	0.00	0	0.00	0	0.00	0	0.00	0	0.00	0	0.00
101	17.02.2007	15:36	STP00	0	8.40	0	3.60	0	0.36	0	0.00	0	0.00	0	0.00	0	0.00	0	0.00	0	0.00
102	17.02.2007	15:36	STP00	0	8.40	0	3.60	0	0.36	0	0.00	0	0.00	0	0.00	0	0.00	0	0.00	0	0.00
103	17.02.2007	15:36	STP00	0	8.40	0	3.60	0	0.36	0	0.00	0	0.00	0	0.00	0	0.00	0	0.00	0	0.00
104	17.02.2007	15:36	STP00	0	8.40	0	3.60	0	0.36	0	0.00	0	0.00	0	0.00	0	0.00	0	0.00	0	0.00
105	17.02.2007	15:36	STP00	0	8.40	0	3.60	0	0.36	0	0.00	0	0.00	0	0.00	0	0.00	0	0.00	0	0.00
106	17.02.2007	15:36	STP00	0	8.40	0	3.60	0	0.36	0	0.00	0	0.00	0	0.00	0	0.00	0	0.00	0	0.00
107	17.02.2007	15:36	STP00	0	8.40	0	3.60	0	0.36	0	0.00	0	0.00	0	0.00	0	0.00	0	0.00	0	0.00
108	17.02.2007	15:36	STP00	0	8.40	0	3.60	0	0.36	0	0.00	0	0.00	0	0.00	0	0.00	0	0.00	0	0.00
109	17.02.2007	15:36	STP00	0	8.40	0	3.60	0	0.36	0	0.00	0	0.00	0	0.00	0	0.00	0	0.00	0	0.00
110	17.02.2007	15:36	STP00	0	8.40	0	3.60	0	0.36	0	0.00	0	0.00	0	0.00	0	0.00	0	0.00	0	0.00

Twin sided gun – C arm

- Compact body
- New electrode arms for various applications
- Although the gun's weight is a little bit more the balancer compensates (balancer included in the price)
- Welding cable up to 5 m with no problems available
- Gun force up to 480 daN / 6 bar
- Water cooling up to the tips
- Magnetic field is far below the legal limitations (EU-directive 2004/40/EG)

